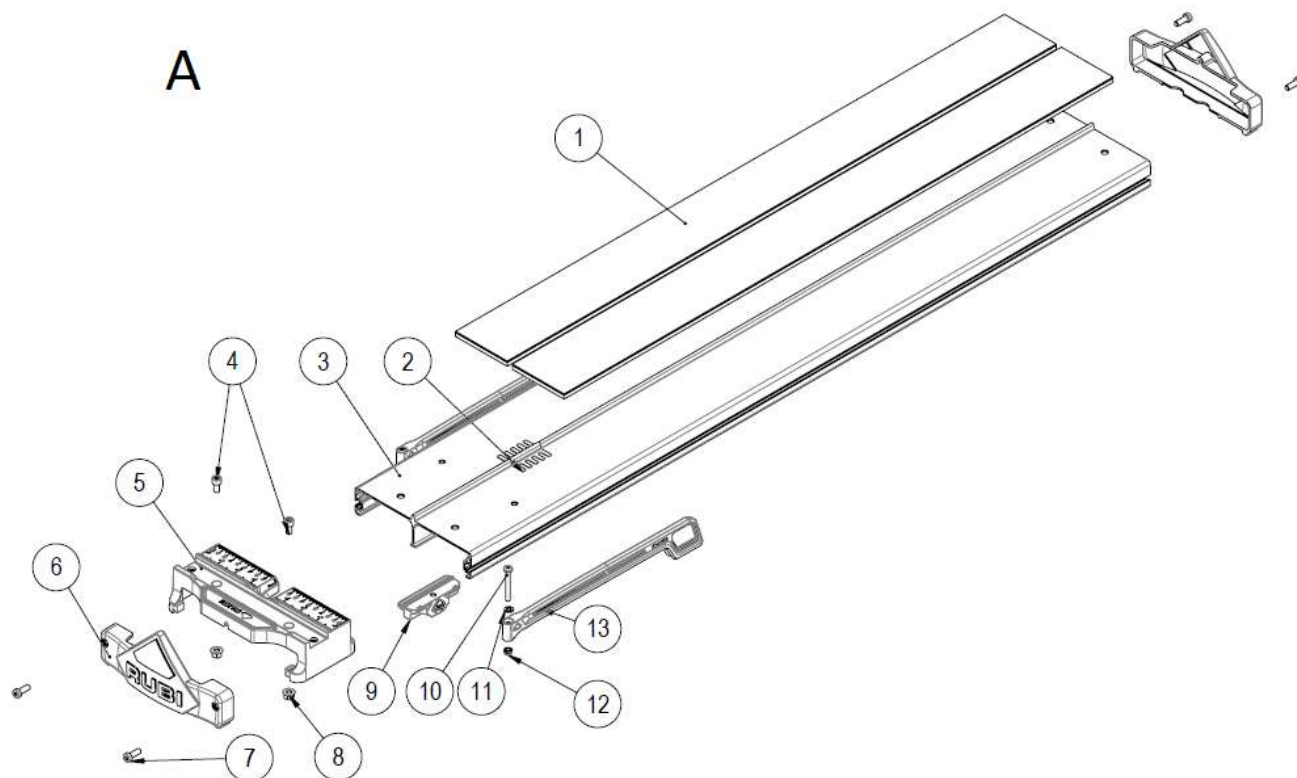


Part-list	ES	EN	Prod.
1	A	GRUPO PORTAHERRAMIENTAS	TOOLHOLDER & SLIDER GROUP
2	B	GRUPO SOPORTE Y GUIAS	GUIDE & SUPPORTS GROUP
3	C	GRUPO BASE Y ESCUADRA	SQUARE & BASE GROUP

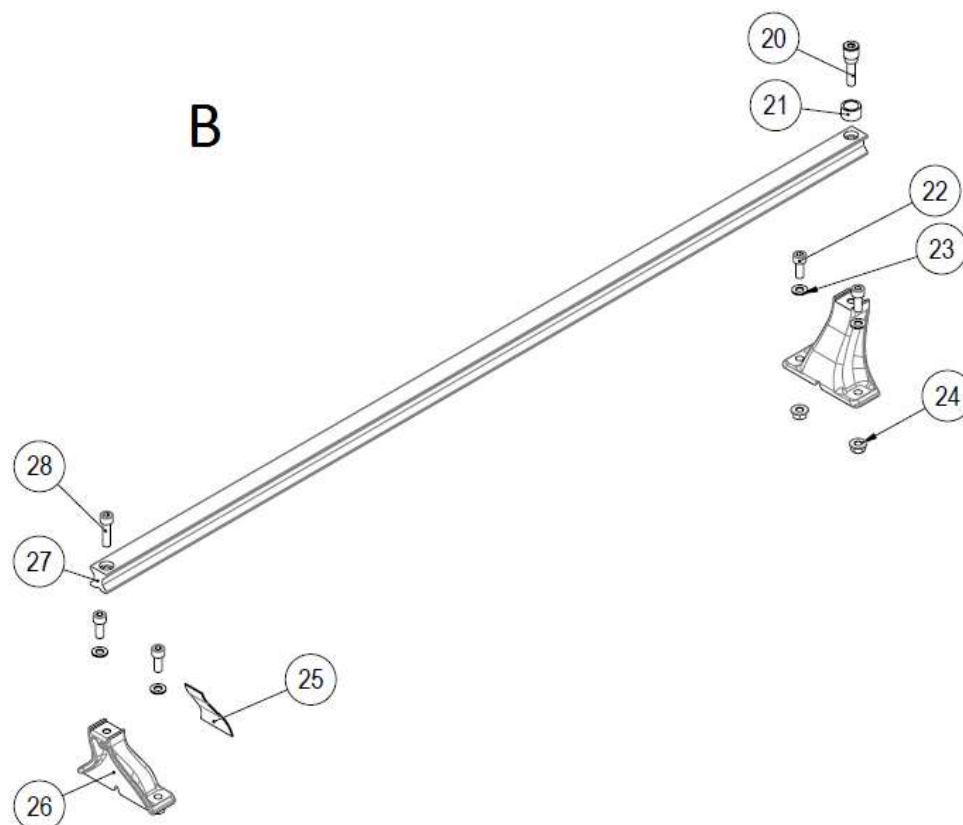
Prod.	ES	EN	From serial num.
14926	X-ONE-65 MAGNET	X-ONE-65 MAGNET	XO000001
14927	X-ONE-85 MAGNET	X-ONE-85 MAGNET	XO000001
14929	X-ONE-100 MAGNET	X-ONE-100 MAGNET	XO000001

Queda reservado el derecho de introducir cualquier modificacion técnica sin previo aviso

We reserve the right to introduce any technical modification without previous notice

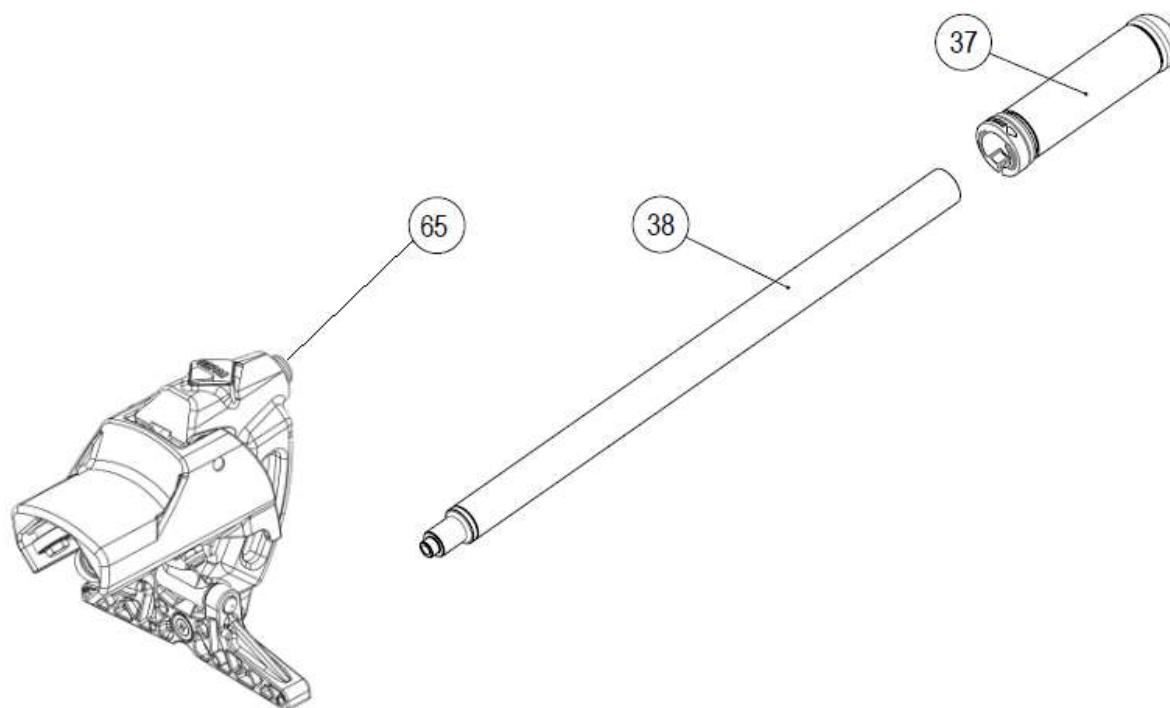


Part-list		ES	EN	Prod.	
1	14334	2	GOMA 80X650 EVA	RUBBER 80X650 EVA	14926
1	14335	2	GOMA 80X850 EVA	RUBBER 80X850 EVA	14927
1	14336	2	GOMA 80X1000 EVA	RUBBER 80X1000 EVA	14929
2	14136	1	REFUERZO COSTILLA TIGER	RIB REINFORCEMENT TIGER	
3	14515	1	BASE 180X35X1202	BASE 180X35X1202	14929
3	14157	1	BASE 180X35X852	BASE 180X35X852	14926
3	14158	1	BASE 180X35X1052	BASE 180X35X1052	14927
4	61258	2	TORN DIN 912 M6X12 6.8 ZN	SCREW DIN 912 M6X12 6.8 ZP	
5	14589	1	ESCUADRA HIT-850	SQUARE HIT-850	
6	14517	2	TAPA BASE X-ONE ROJA	BASE COVER X-ONE RED	14929
6	14165	2	TAPA BASE X-ONE	BASE COVER X-ONE	14926, 14927
7	15031	4	TORN DIN 7984 M6X16 6.8 ZN	SCREW DIN7984 M6X16 6.8 ZP	
8	83035	2	TUERCA DIN 6923 M6 CL8 ZN	NUT DIN 6923 M6 CL8 ZP	
9	14598	2	PATIN PATA APOYO TIGER-185 V2	LATERAL ARM SLIDER TIGER-185 V2	
10	14237	2	TORN DIN 7985 M5X40 6.8 ZN	SCREW DIN 7985 M5X40 6.8 ZP	
11	56035	2	ARAND DIN 125 A5,3 ZN	WASHER DIN125 A5,3 ZP	
12	40045	2	TUERCA DIN 985 M5 CL8 ZN AUTOBLOC	HEX LOCK NUT DIN 985 M5 CL8 ZP	
13	14238	2	PATA DE APOYO X-ONE	SUPPORT ARM X-ONE	



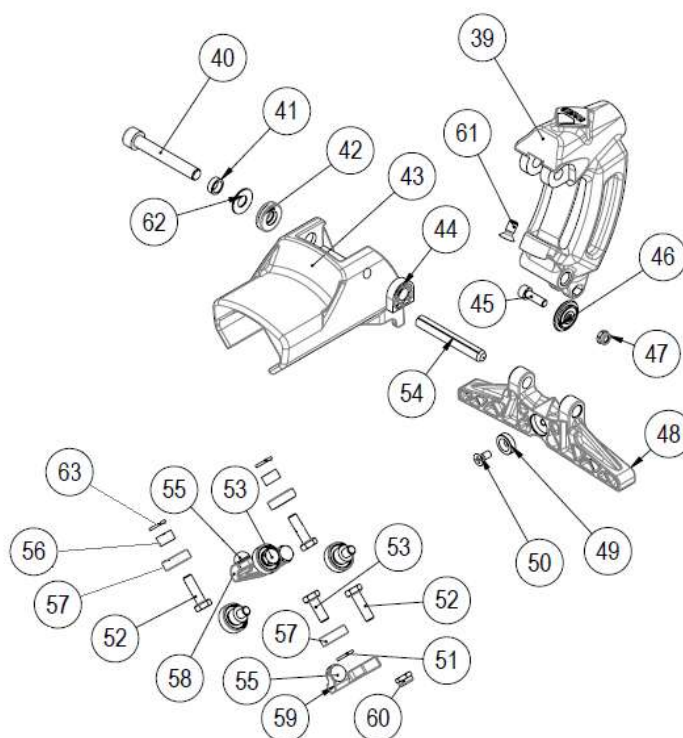
Part-list		ES	EN	Prod.
20	14182	1	TORN FINAL CARRERA X-ONE	STROKE LIMIT BOLT X-ONE
21	13152	1	TOPE CORREDERA Ø15X20X12	CARRIER TOP 15X20X12
22	60432	4	TORN DIN 912 M8X20 6.8 ZN BLANCO	SCREW DIN 912 M8X20 6.8
23	45056	4	ARAND DIN 125 A8,4 ZN	WASHER DIN 125 A8,4 ZP
24	57335	4	TUERCA DIN 6923 M8 CL8 ZN	NUT DIN 6923 M8 CL8 ZP
25	14179	1	PROTECTOR GOMA X-ONE	RUBBER PROTECTION X-ONE
26	14164	2	SOPORTE GUIA X-ONE	GUIDE SUPPORT X-ONE
27	14160	1	GUIA X-ONE 23,5X23,5X894	GUIDE X-ONE 23,5X23,5X89414926
27	14161	1	GUIA X-ONE 23,5X23,5X1094	GUIDE X-ONE 23,5X23,5X109414927
27	14518	1	GUIA X-ONE 23,5X23,5X1244	GUIDE X-ONE 23,5X23,5X124414929
28	12106	1	TORN DIN 912 M8X30 6.8 ZN BLANCO	SCREW DIN 912 M8X30 6.8 ZP WHITE

C



Part-list ES				EN	Prod.
37	17751	1	MANGO RUBI Ø22	HANDLE RUBI Ø22	
38	17706	1	PALANCA M16X1,5 L=400 CARRITO TZ	LEVER M16X1,5 L=400 TOOLHOLDER TZ	
65	14819	1	CJ.CARRO PORTAHERRAMIENTAS X-ONE	CART-TOOLHOLDER ASSEMBLY X-ONE	

C



Part-list	ES	EN	Prod.
39	14167 1	PORTAHERRAMIENTAS X-ONE	TOOLHOLDER X-ONE
40	47642 1	TORN DIN 912 M8X55 8.8 ZN	SCREW DIN 912 M8X55 8.8 ZP
41	14192 1	CASQ 8,2X11X3,55 FE	BUSHING 8,2X11X3,55 FE
42	14180 1	RODAMIENTO AXIAL 8X19,5X6	BEARING 8X19,5X6
43	14166 1	CARRO X-ONE	CART X-ONE
44	14203 1	FRENO MANGO TQ	HANDLE RETAINER TQ
45	55199 1	TORN DIN 912 M5X16 8.8 ZN	SCREW DIN 912 M5X16 8.8 ZP
46	1943 1	RULINA Ø 22 MM SRT	SCORING WHEEL 22 MM SRT
47	40045 1	TUERCA DIN 985 M5 CL8 ZN AUTOBLOC	HEX LOCK NUT DIN 985 M5 CL8 ZP
48	14004 1	PISADOR SPEED MAGNET	SPEED MAGNET BREAKING FEET
49	14118 1	IMAN Ø 4,5X14X4 F=32N	MAGNET Ø 4,5X14X4 F=32N
50	14278 1	TORN GB 6561-86 M4X10 8.8 ZN	SCREW GB 6561-86 M4X10 8.8 ZP
51	25177 2	ARAND DIN 125 A6,4 ZN	WASHER DIN 125 A6,4 ZP
52	15110 6	TORN DIN 933 M6X20 6.8 ZN	SCREW DIN 933 M6X20 6.8 ZP
53	7165 2	TORN DIN 933 M6X16 8.8 ZN	SCREW M6X16 DIN 933 8.8 ZP
54	14330 1	PASADOR DIN 1475 D8X60 PVN	PIN DIN 1475 D8X60 BLACKENING TREATMENT
55	14193 2	TOPE GOMA NBR Ø11X6 SHORE A 72	RUBBER BUMPER NBR Ø11X6 SHORE A 72
56	14168 4	CASQ 6,2X11X4,7 FE	BUSHING 6,2X11X4,7
57	55089 6	RODAMIENTO 626 6X19X6	BEARING 626 6-19-6
58	14173 1	SOPORTE AJUSTABLE DER.TQ	SELF ADJUSTING SUPPORT RIGHT TQ
59	14174 1	SOPORTE AJUSTABLE IZQ.TQ	SELF ADJUSTING SUPPORT LEFT TQ
60	40020 2	TUERCA DIN 985 M6 CL8 ZN AUTOBLOC	HEX LOCK NUT DIN 985 M6 CL8 ZP
61	14119 1	TORN GB 6561 M6X12 8.8 ZN	SCREW GB 6561 M6X12 8.8 ZP
62	14202 1	ARAND DIN 2093 18,0X9,2X1,00X1,40	WASHER DIN 2093 18,0X9,2X1,00X1,40
63	45038 4	ARAND DIN 9021 A6,4 ZN	WASHER DIN 9021 A6,4 ZP